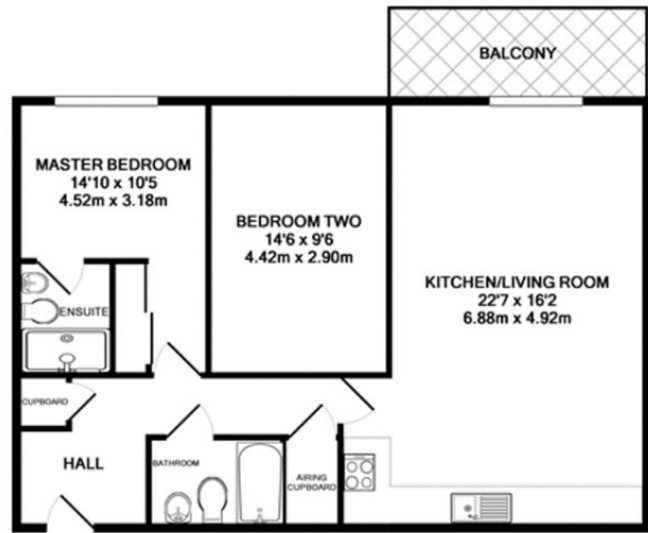




Lynx Court | Wallis Square | Farnborough | GU14 7GQ

£1,500 PCM

Waterfords
Residential Sales & Lettings



Energy Efficiency Rating		Current	Potential
Very energy efficient - lower running costs			
(92 plus)	A		
(81-91)	B	82	82
(69-80)	C		
(55-68)	D		
(39-54)	E		
(21-38)	F		
(1-20)	G		
Not energy efficient - higher running costs			
England & Wales		EU Directive 2002/91/EC	



Description

A well-presented two-bedroom, two-bathroom furnished apartment located in Wallis Square, Lynx Court. This modern property offers a spacious living area, fitted kitchen, and two good-sized bedrooms, including a principal with en-suite. The apartment further benefits from secure underground parking and is ideally suited for professionals. Available to rent from 1st July.

Key features

- Modern fitted kitchen with integrated appliances
- Secure Underground Parking
- Furnished to High Specification
- Suitable for professionals
- Council Tax Band C
- Two Bathrooms, Two bedrooms
- Balcony Over Looking Communal Grounds
- Available July
- Lift access within the building
- EPC B



39 The Hart Centre
Fleet
Hampshire
GU51 3LA
01252 623330

hampshirelettings@waterfords.co.uk
<https://www.waterfords.co.uk/>